

MONTHLY MEMBERSHIP PROGRESS REPORT

LOCATION NEPAL

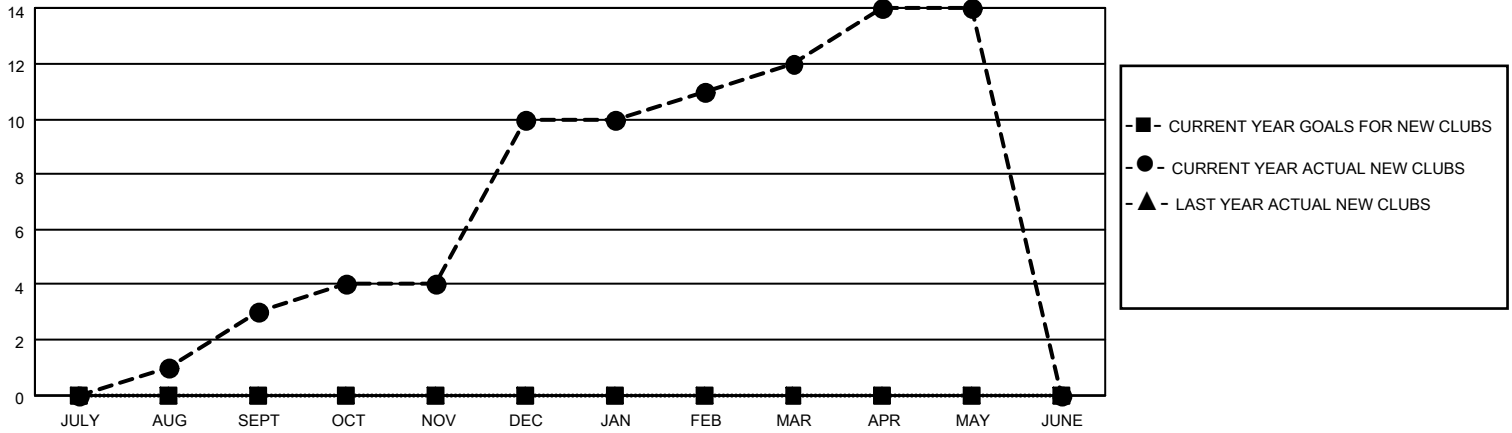
District 325 L

Results as of: 5/31/2023

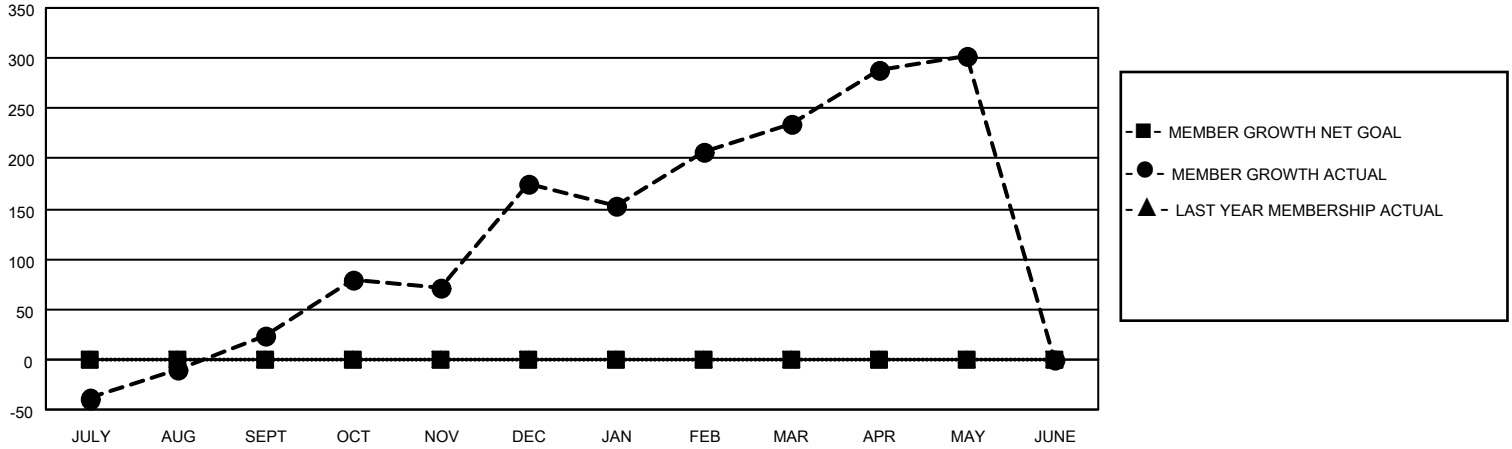
Clubs			
RESULTS FOR 2022-2023			
QUARTER	NEW CLUB GOAL	NEW CLUBS	DROPPED CLUBS
JULY/AUG/SEPT	0	3	2
OCT/NOV/DEC	0	7	0
JAN/FEB/MAR	0	2	2
APR/MAY/JUNE	0	2	0

Members			
RESULTS FOR 2022-2023			
QUARTER	MEMBER GROWTH NET GOAL	MEMBER GROWTH ACTUAL	DROPPED MEMBERS ACTUAL (including transfers)
JULY/AUG/SEPT	0	164	126
OCT/NOV/DEC	0	229	76
JAN/FEB/MAR	0	133	62
APR/MAY/JUNE	0	81	9

GOALS AND ACTUAL NEW CLUBS CUMULATIVE



GOALS AND ACTUAL MEMBERS CUMULATIVE



DROPPED CLUBS: 4

68 CLUBS OF 103 ADDED 1 OR MORE NEW MEMBERS

GENDER DISTRIBUTION

MALE	1,760 (71.43%)
FEMALE	684 (27.76%)
NON BINARY	0 (0.00%)
PREFER NOT TO ANSWER	20 (0.81%)

DROPPED MEMBERS

[CLICK HERE FOR CUMULATIVE MEMBERSHIP DATA](#)

DECEASED	1
CLUB CANCELLED	28
OTHER	244
TOTAL	273

TOTAL FAMILY UNIT MEMBERS 2,038

FAMILY MEMBERS PAYING HALF DUES 1,462